
Rhythmyx

Implementing Word

Version 6.5.2

Copyright and Licensing Statement

All intellectual property rights in the SOFTWARE and associated user documentation, implementation documentation, and reference documentation are owned by Percussion Software or its suppliers and are protected by United States and Canadian copyright laws, other applicable copyright laws, and international treaty provisions. Percussion Software retains all rights, title, and interest not expressly granted. You may either (a) make one (1) copy of the SOFTWARE solely for backup or archival purposes or (b) transfer the SOFTWARE to a single hard disk provided you keep the original solely for backup or archival purposes. You must reproduce and include the copyright notice on any copy made. You may not copy the user documentation accompanying the SOFTWARE.

The information in Rhythmyx documentation is subject to change without notice and does not represent a commitment on the part of Percussion Software, Inc. This document describes proprietary trade secrets of Percussion Software, Inc. Licensees of this document must acknowledge the proprietary claims of Percussion Software, Inc., in advance of receiving this document or any software to which it refers, and must agree to hold the trade secrets in confidence for the sole use of Percussion Software, Inc.

The software contains proprietary information of Percussion Software; it is provided under a license agreement containing restrictions on use and disclosure and is also protected by copyright law. Reverse engineering of the software is prohibited.

Due to continued product development this information may change without notice. The information and intellectual property contained herein is confidential between Percussion Software and the client and remains the exclusive property of Percussion Software. If you find any problems in the documentation, please report them to us in writing. Percussion Software does not warrant that this document is error-free.

No part of this publication may be reproduced, stored in a retrieval system, or transmitted in any form or by any means, electronic, mechanical, photocopying, recording or otherwise without the prior written permission of Percussion Software.

Copyright © 1999-2007 Percussion Software.
All rights reserved

Licenses and Source Code

Rhythmyx uses Mozilla's JavaScript C API. See <http://www.mozilla.org/source.html> (<http://www.mozilla.org/source.html>) for the source code. In addition, see the *Mozilla Public License* (<http://www.mozilla.org/source.html>).

Netscape Public License

Apache Software License

IBM Public License

Lesser GNU Public License

Other Copyrights

The Rhythmyx installation application was developed using InstallShield, which is a licensed and copyrighted by InstallShield Software Corporation.

The Sprinta JDBC driver is licensed and copyrighted by I-NET Software Corporation.

The Sentry Spellingchecker Engine Software Development Kit is licensed and copyrighted by Wintertree Software.

The Java™ 2 Runtime Environment is licensed and copyrighted by Sun Microsystems, Inc.

The Oracle JDBC driver is licensed and copyrighted by Oracle Corporation.

The Sybase JDBC driver is licensed and copyrighted by Sybase, Inc.

The AS/400 driver is licensed and copyrighted by International Business Machines Corporation.

The Ephox EditLive! for Java DHTML editor is licensed and copyrighted by Ephox, Inc.

This product includes software developed by CDS Networks, Inc.

The software contains proprietary information of Percussion Software; it is provided under a license agreement containing restrictions on use and disclosure and is also protected by copyright law. Reverse engineering of the software is prohibited.

Due to continued product development this information may change without notice. The information and intellectual property contained herein is confidential between Percussion Software and the client and remains the exclusive property of Percussion Software. If you find any problems in the documentation, please report them to us in writing. Percussion Software does not warrant that this document is error-free.

No part of this publication may be reproduced, stored in a retrieval system, or transmitted in any form or by any means, electronic, mechanical, photocopying, recording or otherwise without the prior written permission of Percussion Software.

AuthorIT™ is a trademark of Optical Systems Corporation Ltd.

Microsoft Word, Microsoft Office, Windows®, Window 95™, Window 98™, Windows NT® and MS-DOS™ are trademarks of the Microsoft Corporation.

This document was created using *AuthorIT™, Total Document Creation* (see AuthorIT Home - <http://www.author-it.com>).

Schema documentation was created using XMLSpy™.

Percussion Software

600 Unicorn Park Drive

Woburn, MA 01801 U.S.A.

781.438.9900

Internet E-Mail: technical_support@percussion.com

Website: <http://www.percussion.com>

Contents

How Word-based Content Editors Work	3
<hr/>	
How to Create a Word-based Content Editor	4
<hr/>	
Creating the Word Template File	7
Modifying the Style Sheet for Parsing Fields	8
Modifying the Content Assembler to Display Custom Word-based Content Editor Fields	9
<hr/>	
Installing New Features of Rhythmyx Word Connector	11
<hr/>	
Moving Rhythmyx Word Connector Files to the Correct Directory.....	12
Setting the Address in the Word Template Files	14
Processing Related Links.....	16
Copying the Template File to the Client Word Application	17
Updating the sys_FileWord Content Editor Control.....	18
<hr/>	
Index	19
<hr/>	

CHAPTER 1

How Word-based Content Editors Work

The Rhythmyx Word Connector uses Word-based Content Editors to let users create Content Items in Word and upload them to Rhythmyx. Users can then access Word from Rhythmyx to edit these Content Items.

A Word-based Content Editor opens a Word document with the `rxwordsample.dot` template. This template is stored on the Rhythmyx server in the `..\sys_resources\word\` directory. On occasion, Percussion updates the `rxwordsample.dot` template; check the readme for each build to find out whether the template has been modified since your currently installed build.

By default, this template includes the following styles:

- ArticleAbstract
- ArticleAuthor
- ArticleDisplayTitle
- ArticleBody

Note that the FastForward Word template replaces these styles with:

- PageAuthor
- PageBody
- PageDescription
- PageDisplayTitle

NOTE: An earlier version of the Word template existed and was used with earlier versions of Rhythmyx. The current version, `..\sys_resources\word\rxwordsample.dot`, supersedes it. The deprecated Word template is `..\sys_resources\word\Rhythmyx.dot`.

Each of these styles (or each of the styles you include) is associated with a field in the Word-based Content Editor. The content that the user enters in each style in the Word document becomes the value stored in the corresponding column in the backend table for the Content Editor.

The template causes various Rhythmyx features to appear in Word including a *Save to Rhythmyx* option. Rhythmyx saves files uploaded using the *Save to Rhythmyx* option as `.doc` files regardless of the file suffix indicated by the user. It saves the files to a column named `BODYSOURCE` in the backend table.

Rhythmyx uses an ActiveX control to download content items from the repository to MS Word, and a Word Macro to upload the files to the Rhythmyx server.

For information about using the default template styles and configuring a system to use ActiveX, see "Prerequisites for Using the Rhythmyx Connector for Word" in the Rhythmyx Content Explorer online Help.

How to Create a Word-based Content Editor

To create a Word-based Content Type, follow the usual procedure for creating a new Content Type in the Rhythmyx Workbench and add the fields and files that the Word Connector requires:

- 1 Create a new Content Type and add shared and system fields. See "Creating Content Types" in the *Rhythmyx Implementation Guide* for help adding new fields.
- 2 Add fields that will be entered in Word as local fields with a **data type** of text. See the section "Entering Content Editor Properties" in the *Rhythmyx Implementation Guide* for help.
- 3 Rhythmyx uses the `sys_FileWord` control to upload files from Microsoft Word. The `sys_FileWord` control uses the fields `bodysource`, `bodysource_encoding`, `bodysource_filename`, and `bodycontent` to upload and store information. Add these as local fields and define them as follows:

Name	Control	Data Type	Format
<code>bodysource</code>	<code>sys_FileWord</code>	binary	max
<code>bodysource_encoding</code>	<code>sys_HiddenInput</code>	text	50
<code>bodysource_filename</code>	<code>sys_EditBox</code>	text	50
<code>bodycontent</code>	<code>sys_HiddenInput</code>	text	max

- 4 On the Content Type properties tab, attach the following pre-processing extensions with the specified parameters in the order listed:

Exit	Parameter Name	Parameter Value
generic/sys_copyParameter	source	<code>bodysource_filename</code>
	destination	filename
generic/sys_copyParameter	source	<code>bodysource_clear</code>
	destination	<code>body_clear</code>
xml/dom/sys_xdTextToDom	sourcename	<code>bodysource</code>
	DOMname	XMLDOM
	tidyProperties	<code>rxW2Ktidy.properties</code>
	serverPageTags	<code>rxW2KserverPageTags.xml</code>
	encodingDefault	UTF8
	Validate	(leave blank)

Exit	Parameter Name	Parameter Value
xml/dom/sys_xdTransformDOMToText	SourceName	XMLDOM
	StyleSheet	parsebody.xsl
	DestName	body
xml/dom/sys_xdTransformDOM	SourceName	XMLDOM
	StyleSheet	parsemeta.xsl
	DestName	XMLDOM
xml/dom/sys_xdDOMToParams	SourceName	XMLDOM
	AppendParameter	(leave blank)

- 5 Include the following parameters and values as links (external) with the `sys_FileWord` control. Replace the application names with your Content Editor application name, the resource names with your Content Editor resource name, and the template name with your template name. For help, open the FastForward GenericWord Content Type in the Rhythmyx Workbench and click [...] beside the Values for an example.

Parameter	Value
ContentBodyURL	<code>sys_MakeAbsLink(..\rxs_GenericWord_ce/genericword.html, sys_contentid, PSXParam/sys_contentid, sys_revision, PSXParam/sys_revision, sys_command, binary, sys_submitname, bodysource, psessionid, PSXUserContext/SessionId)</code>
RxContentEditorURL	<code>sys_MakeAbsLink(..\rxs_GenericWord_ce/genericword.xml, sys_contentid, PSXParam/sys_contentid, sys_revision, PSXParam/sys_revision, sys_command, edit, psessionid, PSXUserContext/SessionId)</code>
WordTemplateURL	<code>sys_MakeAbsLink(..\rxs_GenericWord_ce/rxs_word.dot, psessionid, PSXUserContext/SessionId, , , , ,)</code>

- 6 Save the Content Type.
- 7 Create a folder under the Rhythmyx root named `psx_ce + YourContentTypeName` (for example, the folder for the FastForward `rffGenericWord` Content Type is `psx_cerffGenericWord`).
- 8 In your new folder, copy the `contentfilter.xsl`, `ParseMeta.xsl` and `ParseBody.xsl` files from `<Rhythmyx root>\sys_resources\word`.
- 9 Create a Word template (.dot) file.
- 10 **Modify the `ParseMeta.xsl` or `ParseBody.xsl` files to reflect the new Word styles and fields added in the .dot and XML files.** (see "Modifying the Style Sheet for Parsing Fields" on page 8)

- 11** *Modify formatting of the body content fields so that they display correctly on assembled pages.* (see "Modifying the Content Assembler to Display Custom Word-based Content Editor Fields" on page 9)

Creating the Word Template File

Creating a Word-based Content Editor involves specifying fields that will be filled by information entered in Word. The Word template file must include a style for each of these fields.

Copy the current Word template file:

```
..\sys_resources\word\rxwordsample.dot
```

and store it with the name of the new content editor in the folder for the Content Editor in the Rhythmyx root, for example:

```
..\rxWord_ce\rxWord.dot
```

Open the template file in Word and do the following:

- 1 Add a style to correspond with each field in your new Content Editor that you want to be entered in Word. You may specify more than one style for your body field.

By default, rxwordsample.dot includes the styles:

- ArticleDisplayTitle
- ArticleAuthor
- ArticleBody
- ArticleAbstract

You can use or modify any of these default styles.

Note that the FastForward GenericWord Content Type uses a Word template that replaces these styles with:

- PageAuthor
- PageBody
- PageDescription
- PageDisplayTitle

- 2 Change the custom property RxContentEditorURL in the template to point to the new Content Editor.

For instructions on creating or modifying a Word template file, see *Create a Document Template* in the Microsoft Word Help. For instructions on changing a custom property in Word, see *Modify a Custom File Property* in the Microsoft Word Help.

NOTE: An earlier version of the Word template existed and was used with earlier versions of Rhythmyx. The current version, `..\sys_resources\word\rxwordsample.dot`, supersedes it. The deprecated Word template is `..\sys_resources\word\Rhythmyx.dot`.

Modifying the Style Sheet for Parsing Fields

The `ParseMeta.xml` file performs formatting on Word-based Content Editor fields containing metadata and inserts them into the appropriate database columns in the backend table for the Content Editor. Any fields that are not included in `ParseMeta.xml` are formatted by `ParseBody.xml` and inserted into the body field for the Content Editor.

When you create a Word-based Content Editor, modify `ParseMeta.xml`, `ParseBody.xml`, and `contentfilter.xml` to use the filenames, fields, and styles that your Content Editor uses:

1 In `ParseMeta.xml`:

- change the reference to `contentfilter.xml` to point to your Content Editor directory:

```
<xsl:import href="../../../rx_WordContent_ce/contentfilter.xml" />
```

- Change metadata field names and styles to those that your Content Editor and Word template use. For example, in the following code, change the field name `<ArticleTitle>` to a name of a new field in the Content Editor. Change the style `ArticleDisplayTitle` to a new style in the Word template.

```
<ArticleTitle>
  <xsl:choose>
    <xsl:when
test="string(//html:body[1]//html:p[@class='ArticleDisplayTitle'])">
      <xsl:apply-templates
select="//html:body[1]//html:p[@class='ArticleDisplayTitle']" />
    </xsl:when>
    <xsl:when
test="string(//html:body[1]//html:p[@class='MsoTitle'])">
      <xsl:apply-templates
select="//html:body[1]//html:p[@class='MsoTitle']" />
    </xsl:when>
    <xsl:otherwise>COULD NOT FIND A TITLE</xsl:otherwise>
  </xsl:choose>
</ArticleTitle>
```

2 In `ParseBody.xml`:

- change the reference to `contentfilter.xml` to point to your Content Editor directory:

```
<xsl:import href="../../../rx_WordContent_ce/contentfilter.xml" />
```

3 In `contentfilter.xml`:

- Change metadata style names to those that your Word template uses. For example, in the following code, change `ArticleDisplayTitle` to a new style in the Word template:

```
<xsl:template match="html:p[@class='ArticleDisplayTitle']"
mode="contentfilter" />
```

Modifying the Content Assembler to Display Custom Word-based Content Editor Fields

Content fields that you add to the custom Word-based Content Editor may require additional processing so that they appear in the desired format on the assembled output page.

Where you add the additional formatting depends on the complexity of the style and how you want to use the output. Use the following guidelines:

- If the style that you want to apply is simple, include the formatting in your output CSS. Simple styles affect the appearance of text, for example, by changing the font or color.
- If the style is complex, add the formatting to `ParseBody.xsl` or `rx_InlineLinks.xsl`. Complex styles affect the appearance of content on a page, for example, by adding tables or line breaks.
 1. If you plan to use the style in various output formats, add a generic style for the content in `ParseBody.xsl`. `ParseBody.xsl` stores the content in the generic style prior to output assembly. When output assembly occurs, the various output mechanisms reformat the content as required.
 2. If you plan to output the style as an HTML page, add the formatting style that you want to appear on the final Web page to `rx_resources/stylesheets/assemblers/rx_InlineLinks.xsl`.

CHAPTER 2

Installing New Features of Rhythmyx Word Connector

The current build of Rhythmyx may include changes to the Rhythmyx Word Connector since your previous installation. You can install Rhythmyx either as an upgrade or as a new installation. If you install it as an upgrade, the deprecated Article Word Content Editor (if it was present in your original version) and custom Word-based Content Editors will function as they did previously, but you can install new features. If you install Rhythmyx as a new installation or you upgrade and install the new Rhythmyx Word Connector features, you must set the Rhythmyx server address in the new template file.

Moving Rhythmyx Accelerator for Word Files to the Correct Directory (see "Moving Rhythmyx Word Connector Files to the Correct Directory" on page 12)

Setting the Address in the Word Template Properties (see "Setting the Address in the Word Template Files" on page 14)

Processing Related Links (see "Moving Rhythmyx Word Connector Files to the Correct Directory" on page 12)

Copying the Template File to the Client's Word Application (see "Copying the Template File to the Client Word Application" on page 17)

Updating the sys_FileWord Content Editor Control (on page 18)

Moving Rhythmyx Word Connector Files to the Correct Directory

During development, Percussion Software may modify the rxwordsample.dot file and various .cab files used to support Rhythmyx functionality in Word. When you upgrade to a new version of Rhythmyx (and in some cases, when you upgrade to a new build, such as to fix a bug), you may need to move the Rhythmyx Word Connector files from the install directory (sys_resources/word) to the local directory (rx_resources/word) to make them available to download to your users.

You may also need to develop your Rhythmyx-enabled Word templates again based on the new version of the rxwordsample.dot template provided by Percussion Software to access new features included in the new template. Then move the custom files corresponding to the default files in the instructions below.

NOTE: Be sure you back up or rename your existing files before copying the new files.

NOTE: to users of Rhythmyx Version 4.0: If you install Rhythmyx Build 20020326 as a new installation, the installer copies the files associated with the Rhythmyx Word Connector into the correct directories. If you install Rhythmyx Build 20020326 as an upgrade you must move some of the Rhythmyx Word Connector files to a new directory in order to access the new features in the Article Word Content Editor and custom Word-based Content Editors.

NOTE: If you have created a custom Word-based Content Editor, move the custom files corresponding to the default files in the instructions below.

To get the new Word Connector features after upgrading:

- 1 Copy the following files from

```
../sys_resources/word
```

to

```
../<Word-based Content Editor folder>.
```

```
rxwordsample.dot
```

```
parsebody.xsl
```

```
parsemeta.xsl
```

```
contentfilter.xsl
```

If your system is still using the deprecated Rhythmyx.dot template, in the Content Editor definition files for your Word-based Content Editors:

locate the <PSXParam name="WordTemplateURL"> node and change:

```
<PSXTextLiteral id="0">
```

```
<text>../sys_resources/word/Rhythmyx.dot</text>
```

```
</PSXTextLiteral>
```


to:

```
<PSXTextLiteral id="0"> <text>../<Word-based Content Editor  
folder>/rxwordsample.dot</text>
```

```
</PSXTextLiteral>
```

2 Copy the file: rxwordocx.cab

from: ../sys_resources/word

to: ../rx_resources/word (If the directory “/word” does not exist, create it.)

3 If your system is using rxword.cab instead of rxwordocx.cab, in the file:

```
../sys_resources/stylesheets/sys_Templates.xml
```

locate the <object id="word"> node and change:

```
codebase = ../sys_resources/word/rxword.cab
```

to:

```
codebase = ../rx_resources/word/rxwordocx.cab
```

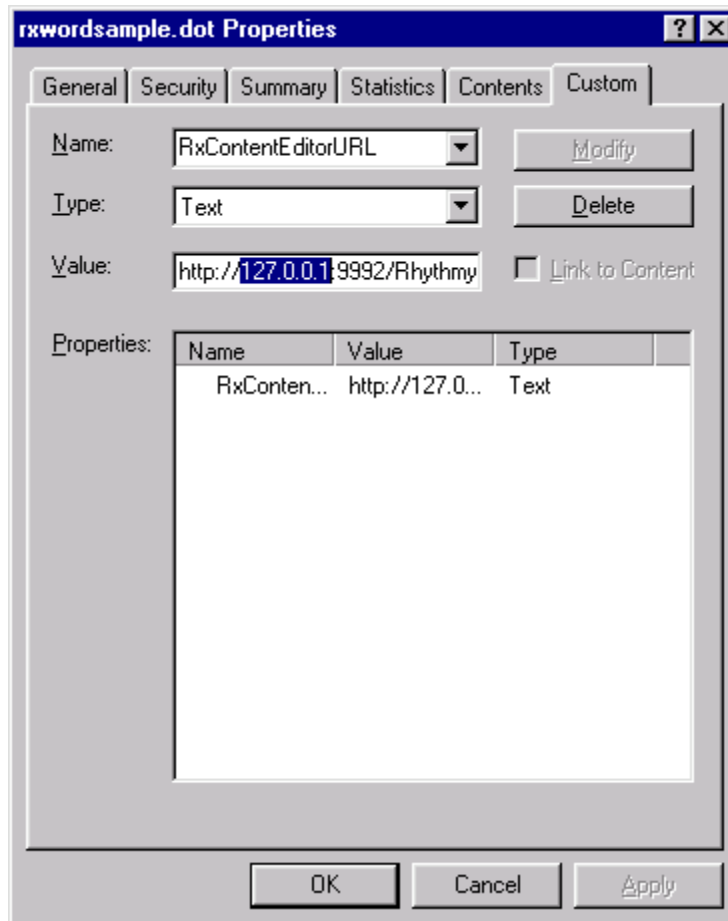
4 Stop and restart the Rhythmyx server.

Setting the Address in the Word Template Files

If you install Rhythmyx as a new installation, or if you upgrade and follow the instructions in *Installing New Features of Rhythmyx Word Connector* (on page 11) to access the new features, you must change the value of the address in the template file's properties.

To change the template file address value:

- 1 Right click `../sys_resources/word/rxwordsample.dot` and select Properties in the drop menu. Rhythmyx opens the Template Properties dialog.
- 2 Click the Custom tab.



- 3 Click the Properties Name to make the values editable in the fields.
- 4 Change the Value of the host address from the default of 127.0.0.1 to the address of the Rhythmyx server.
- 5 Click [OK].

- 6** If you have already moved the new version of rxwordsample.dot into any of your Word-based Content Editor folders, repeat the procedure for those copies of the file.

Processing Related Links

If you install Rhythmyx as a new installation, or if you upgrade and follow the instructions in *Installing New Features of Rhythmyx Word Connector* (on page 11) to access the new features, add the `sys_xdProcessRelatedLinks` exit to the Word-based Content Type. The `sys_xdProcessRelatedLinks` exit creates the inline links and URLs for inline images for the published site.

To add the `sys_xdProcessRelatedLinks` exit to the Word-based Content Type:

- 1 Open the Word-based Content Type in the Workbench.
- 2 Click the Properties tab
- 3 Under Item Transforms and Validations, click the Pre-Processing tab.
Rhythmyx opens the Exit Properties dialog.
- 4 Add the exit `sys_xdProcessRelatedLinks`.
The Extensions Parameters dialog opens
- 5 Enter XMLDOM as the value of the SourceObject parameter.
- 6 Use the arrow button to move `sys_xdProcessRelatedLinks` to the position after `sys_xdTextToDom`.
- 7 Save the Content Type.

Copying the Template File to the Client Word Application

After you have configured and copied Rhythmyx files to use the Rhythmyx Connector for Word features, ensure that users attach the new `rxwordsample.dot` template to their Rhythmyx Word documents. You can install the template in one of two ways:

- Require users to open their first Rhythmyx Word document after upgrade through the **[Launch Word]** button in the Word-based Content Editor to automatically attach the template to Word. If they open their first Rhythmyx Word document directly in Word, the new template will not be attached.
- Send users the `rxwordsample.dot` template and instruct them to copy it into their Word template directories.

Updating the `sys_FileWord` Content Editor Control

During development or to fix bugs, Percussion Software may modify the `sys_FileWord` control, requiring you to update the existing copy of the control. The updated control will be in `sys_resources\stylesheets\sys_templates.xml`. Copy the `<controlMeta>` node (and all of its children) of the `sys_FileWord` template control in this stylesheet and use it to replace the `<controlMeta>` node of the `sys_FileWord` template control in `rx_resources\stylesheets\rx_templates.xml`.

Index

C

- Copying the Template File to the Client Word Application • 11, 17
- Creating the Word Template File • 7

H

- How to Create a Word-based Content Editor • 4
- How Word-based Content Editors Work • 3

I

- Installing New Features of Rhythmyx Word Connector • 11, 14, 16

M

- Modifying the Content Assembler to Display Custom Word-based Content Editor Fields • 6, 9
- Modifying the Style Sheet for Parsing Fields • 5, 8
- Moving Rhythmyx Word Connector Files to the Correct Directory • 11, 12

P

- Processing Related Links • 16

S

- Setting the Address in the Word Template Files • 11, 14

U

- Updating the sys_FileWord Content Editor Control • 11, 18